



## FT1505 Peristaltic Pump Head

The FT1505 pump head is a cutting-edge creation designed to meet precise market demands. It features an elegant and compact design, with user-friendly elements such as observation windows and cover open indicators, greatly enhancing operational convenience. Additionally, the FT1505 offers precise and consistent low-pulsation flow control, making it ideal for bio-fermentation and various OEM applications.

**Application fields:** Biopharmaceuticals, Medical Equipment, Laboratory Instruments, and Various OEM Supply Needs

**Typical applications:** Biochemical Fermentation, Dentistry, Surgical Irrigation, etc.

### Features

- **Compact and Exquisite, Ideal for OEM Integration**

The pump head boasts an elegant appearance and compact structure, making it easy to integrate into various instruments and devices, effectively saving space.

- **Single-Handed Operation for Enhanced Efficiency**

The flip-top design allows for quick one-handed tube installation. Tubes automatically position and lock without adjustment, significantly improving work efficiency.

- **Observation window and cover indicator for clear user experience**

The observation window also serves as a cover opening indicator. The internal operation status is clearly visible, and the cover opening guide is straightforward, significantly enhancing the user experience.

- **Spring Block Design to Extend Tubing Life**

The spring block design extends the life of the tube, ensures stable flow output, reduces pulsation, and guarantees high-precision fluid control.

- **Low Pulsation**

The four-roller design provides precise and consistent low-pulsation flow control.

- **High Flow Rate**

The maximum continuous flow rate is 370 mL/min, and the maximum intermittent flow rate is 550 mL/min.

- **Flexible Compatibility with Various Tube Sizes**

Supports six tube sizes with a wall thickness of 1.6mm, accommodating diverse application scenarios.

- **Two Models: Standard and High Pressure**

The adjustable spring offers standard and high-pressure models to meet different usage needs.

- **Optional Cover Opening Stop and Speed Monitoring Features**

Optional features include cover opening stop and speed monitoring, ensuring safe operation and monitoring the running status.

## Pump Head Specifications

Channel	1
Roller	4
Tubing fixing	Spring tube clamp, divided into two adjustable levels: large tube clamp and small tube clamp
Clearance adjustment	Adjustable
Material	PET
Dimension	64×64×43mm
Working Environment	Temperature 0 ~ 40℃, relative humidity < 80%
Optional function	Cover opening stop, speed monitoring
Weight	102g

## Flow Parameters

Tube material: silicone, wall thickness 1.6mm

Applicable material: Silicone, Pharmed, A-60-G, PVC, Viton

Tube Material	Max Speed(rpm)	Applicable Tube	Max Flow Rate(mL/min)
Silicone	400(continuous)	120#, 13#, 14#, 19#, 16#, 25#	370
	600(intermittent)		550

## FT1505 Applicable Tube and Flow(600rpm is intermittent working )



Flow rate(mL/min)

Tube model	1rpm	30rpm	60rpm	100rpm	200rpm	400rpm	600rpm
120#	0.02	0.6	1.2	2.1	4.3	8.7	12.9
13#	0.04	1.2	2.5	4.1	8.3	16.5	25
14#	0.14	4.2	8.5	14	28	57	85
19#	0.29	8.7	17.5	29	58	115	175
16#	0.5	15	30	50	100	200	300
25#	0.92	27	55	92	184	370	550

★ Note: The inlet and outlet tubes are each 500 mm long and lie on the same horizontal plane. Variations in the operating conditions, including the type of liquid, viscosity, tube length, and pressure difference between the inlet and outlet, will affect the flow rate. For further assistance, please consult our engineer.

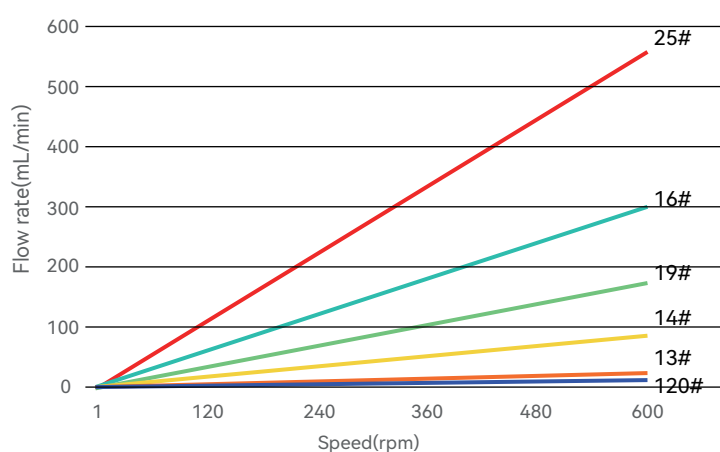
## Tube Clamp Selection

The tube clamp can be adjusted to better accommodate pump pipes with inner diameters ranging from 0.5mm to 4.8mm

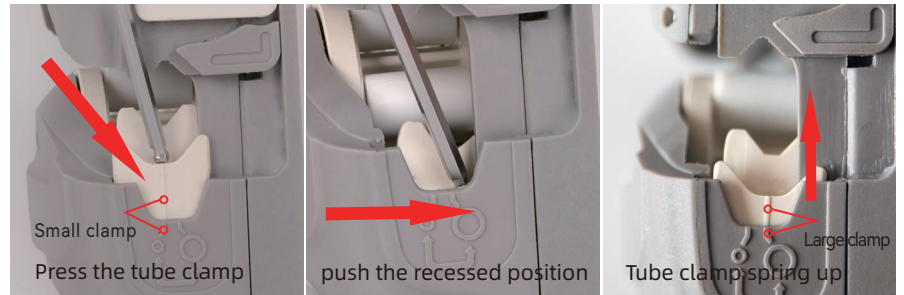
Tube Clamp Selection	Tube Specifications					
	120#	13#	14#	19#	16#	25#
Small clamp 	✓	✓	✓	✓	✓	x
Large clamp 	x	x	x	✓	✓	✓

The standard pump flow chart is provided for reference. For non-standard or special flow requirements, we offer

FT1505 Pump Head Speed and Flow Curve

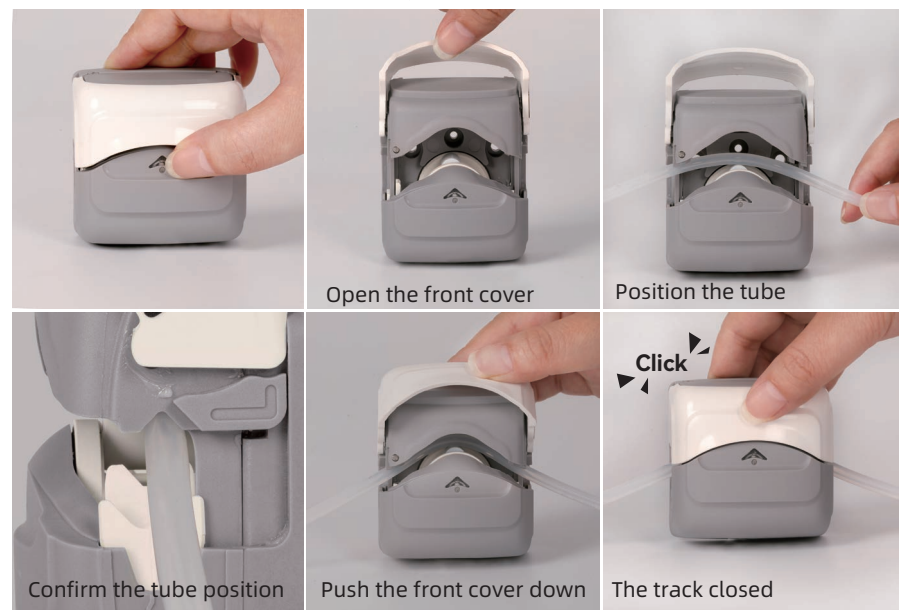


## Method for Switching Pump Head Clamp



- Press the tube clamp obliquely downwards towards the target switching position until the upper part of the tube clamp is disengaged from the limit point.
- Continue to push the recessed position obliquely downwards into the target position of the tube clamp switch; the tube clamp will spring up, completing the switch, as shown in the figure below.

## Tubes Installation Process Diagram

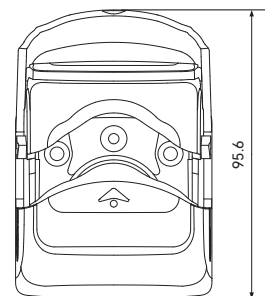
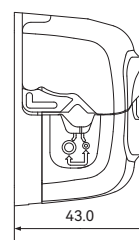
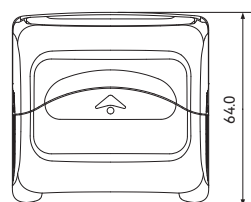


### Open the front cover until fully opened.

- A space for installing the tube is created between the movable front casing and the pump head core, where the tube is then positioned.
- Make sure the internal soft tube in the pump head is properly aligned so it can extend naturally without any twists or turns.
- Push the movable front cover down until it clicks. Once you hear the click, the front cover locks into place, the track automatically closes, and the tube is automatically stretched and secured in this process.

unit: mm

## Dimensions



### Order Information

Product Model	Description	Pressure Range(Mpa)
FT1505	Standard Pressure Pump Head	01-0.15
FT1505-H	High Pressure Pump Head	0.15-0.25

**Note:** If you need the high-pressure version, please contact customer service.