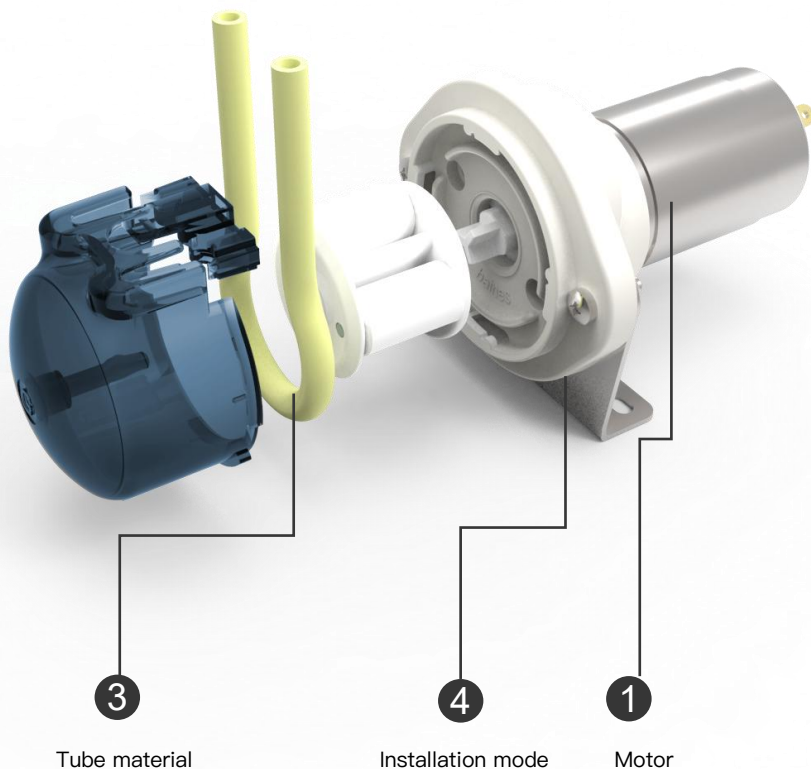


CP2 DC motor peristaltic pump



● Structural decomposition

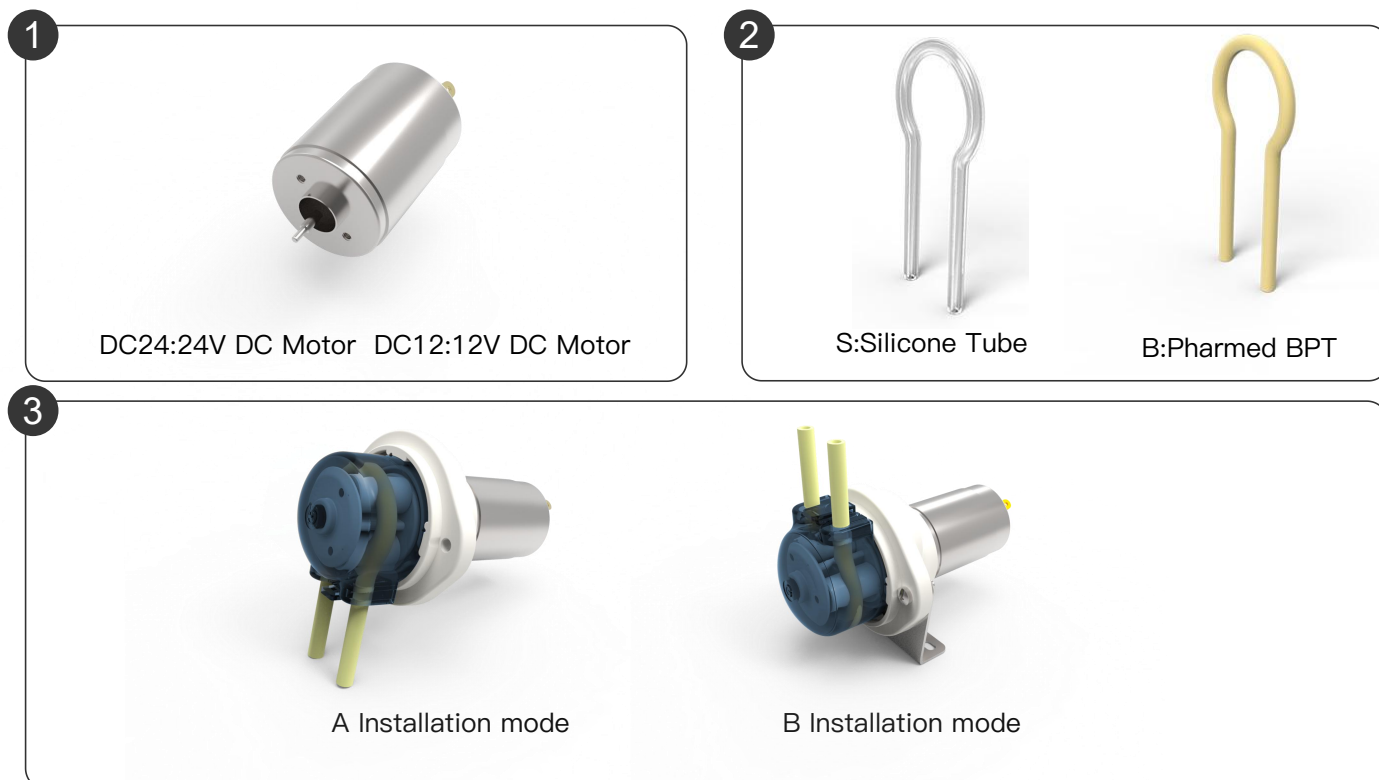
- Suitable for viscous and non-viscous liquid transport
- Small size, compact structure, light weight
- Plastic gear drive, high reliability, low noise
- Easy maintenance, quick replacement of pump tube, pump head





● Model Interpretation

CP2 — **D24** **B30** **A**

1 2 3



● Pump tube selection

Code/Material	Features	Tube life
B  PharMed BPT	No cytotoxicity and hemolytic, resistance to ozone and UV rays, heat, ozone, acid and alkali resistance, anti-aging, anti-oxidation, long life. Operating temperature range -51 °C ~135 °C	≥1000h
S  Silicon tube	Low cost, weak acid and alkali resistance, corrosion resistance to chemicals compared to the BPT pump pipe	≤200h

Pump tube life testing method:

BP200 peristaltic pump, speed: 430r/min, temperature 20 °C, Test liquid: water, continuous operation test. The slower the rotational speed of the peristaltic pump, the longer the service life of the pump tube. The service life of the pump tube may vary depending on the operating conditions, pipeline pressure, and liquid corrosiveness.

● Flow parameter

Tube Species		S30	S46	B30	B46
ID×OD		3X5	4X6	3X5	4X6
Tube Materials		Silicon tube	Silicon tube	BPT	BPT
Flow rate ml/min	24V DC Motor0.3A	140	230	130	210
	12V DC Motor0.6A	140	230	130	210
deal working conditions: ambient temperature 0–50 degrees, relative temperature less than 80%					

Flow testing method:

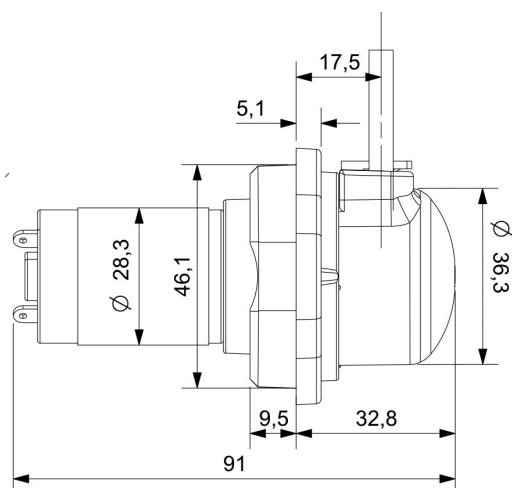
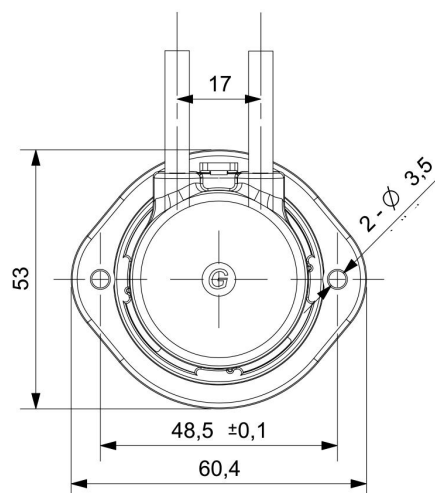
Water test at room temperature (20 °C) and atmospheric pressure.

The above data is for reference only, and there may be deviations in flow rate depending on different liquids, pressures, and pipeline lengths.

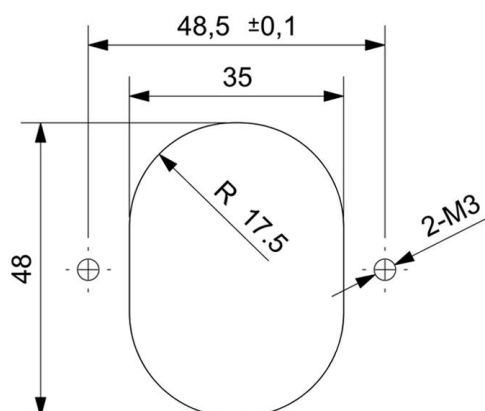
The material, flow rate, and control method of the pump tube can be customized according to the needs.

● Installation method

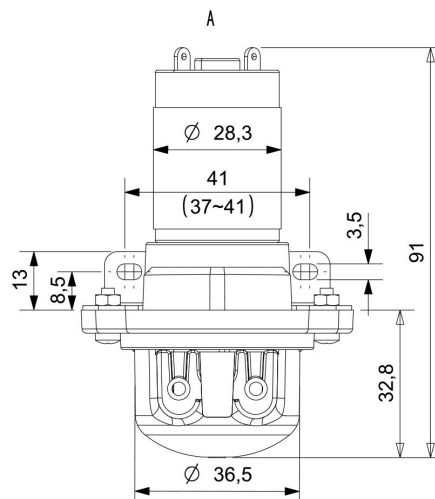
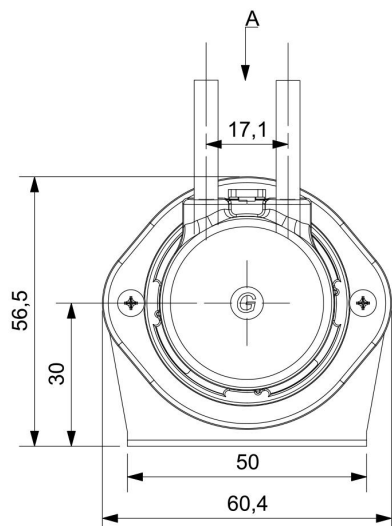
Installation mode(A)



Opening size(A)

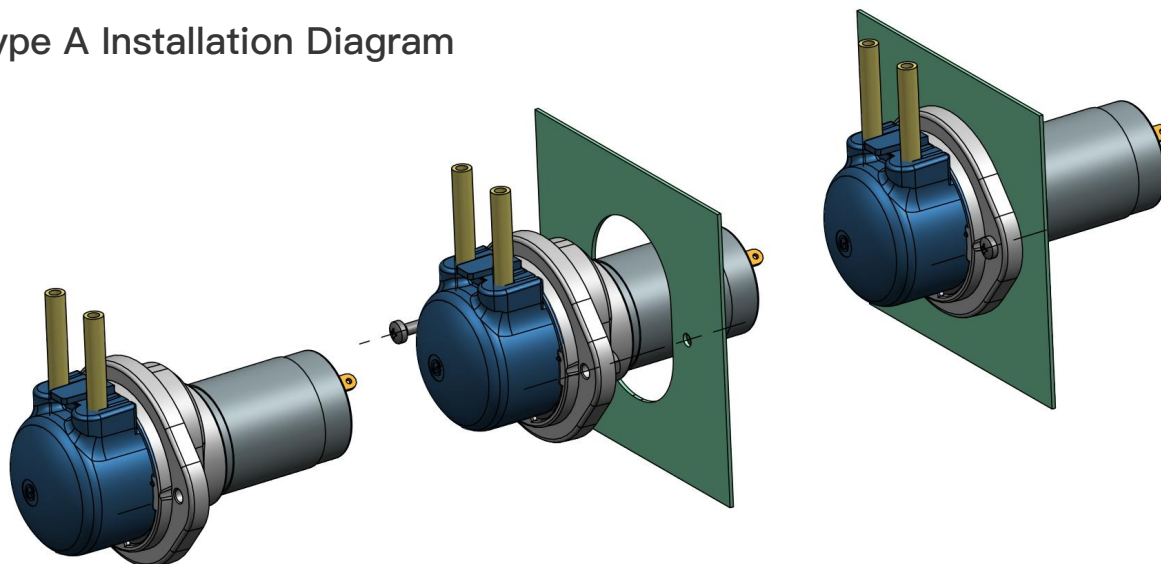


Installation mode(B)

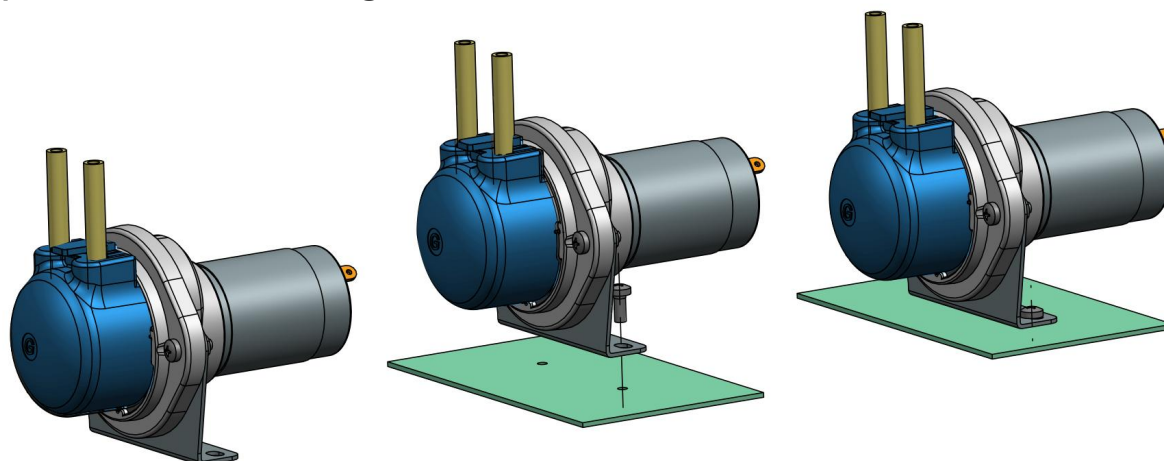


● Installation method

Type A Installation Diagram

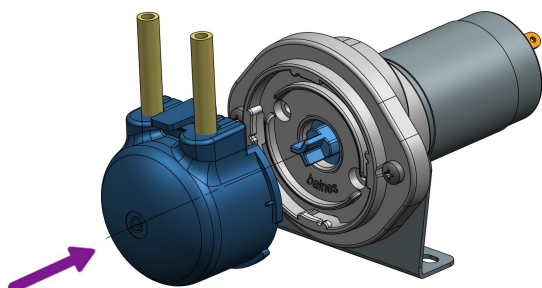


Type B Installation Diagram

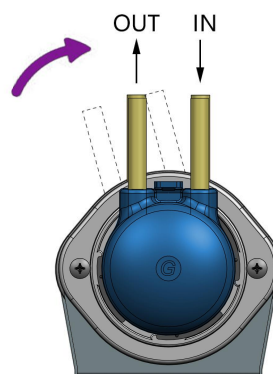


Pump head removal diagram

1. Load the corresponding position in the direction of the Arrow



2. Clockwise rotation 15° slot in place Rotor rotation is recommended clockwise, The orientation of the entrances and exits is shown below



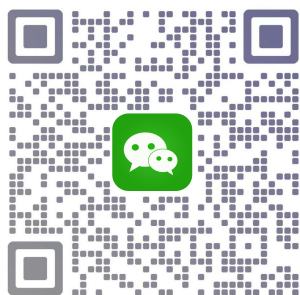
LEIRONG

雷熔流体

— Precision delivery intelligent control —

From product configuration to test conditions, it can be customized to your needs

Give your product a competitive advantage in the market



Alex

Tel/WeChat:15316363092

E-mail:15316363092@163.com

Lei Rong Fluid Tech (Shanghai) Co.,Ltd.