

CP1 DC Motor Peristaltic Pump

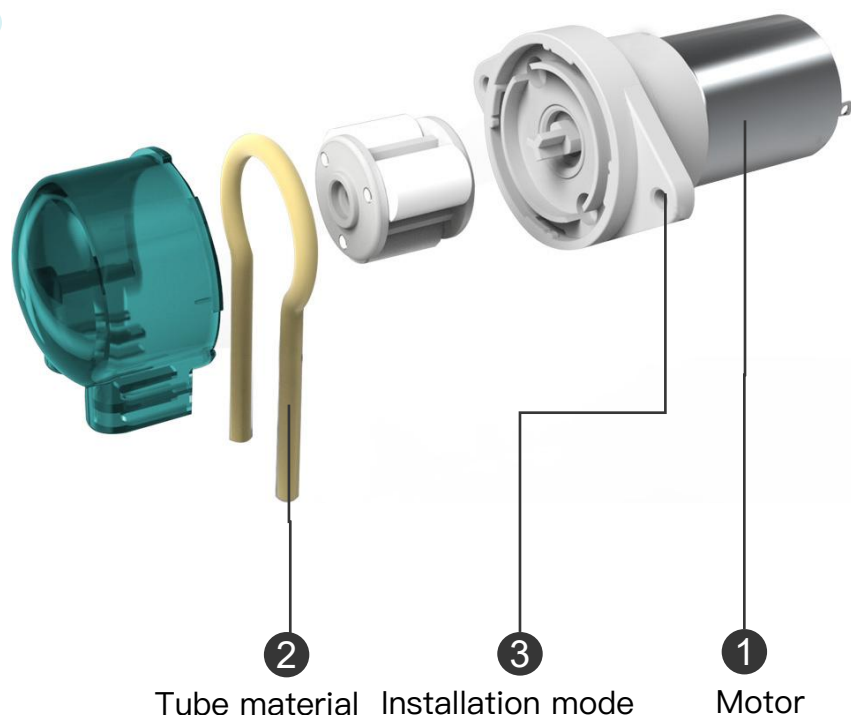


A/1

Product manual

● Structural decomposition

- Ear drive Stable output Low noise
- Compact and chic
- Easy maintenance and quick tube replacement



● Model Interpretation

CP1

— DC12

B20

A

1

2

3

1



DC24:24V DC Moter DC12:12V DC Moter

2

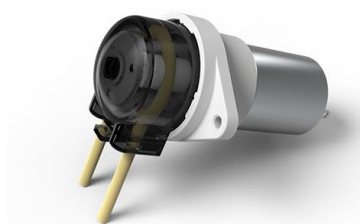


S:Silicone Tube





B:Pharmed BPT

3



A Installation mode

● Pump tube selection

Code/Material	Features	Pump pipe service life
B  PharMed BPT	No cytotoxicity and hemolytic, resistance to ozone and UV rays heat, ozone, acid and alkali resistance, anti-aging anti-oxidation, long life. Operating temperature range -51 °C ~135 °C	≥1000h
S  Silicone tube	Low cost, weak acid and alkali resistance, corrosion resistance to chemicals compared to the BPT pump pipe	≤200h

Pump tube life testing method:

CP1 peristaltic pump, speed: 430r/min, temperature 20 °C, Test liquid: water, continuous operation test.

The slower the rotational speed of the peristaltic pump, the longer the service life of the pump tube. The service life of the pump tube may vary depending on the operating conditions, pipeline pressure, and liquid corrosiveness.

● Flow parameter

Tube Species		S20/B20	S30/B30
ID×OD		2X4	3X5
Tube Materials		Silicone tube/BPT	
Flow rate ml/min	24V DC Moter0.2A	40	95
	12V DC Moter0.4A	40	95
Deal working conditions: ambient temperature 0–50 degrees, relative temperature less than 80%			

Flow testing method:

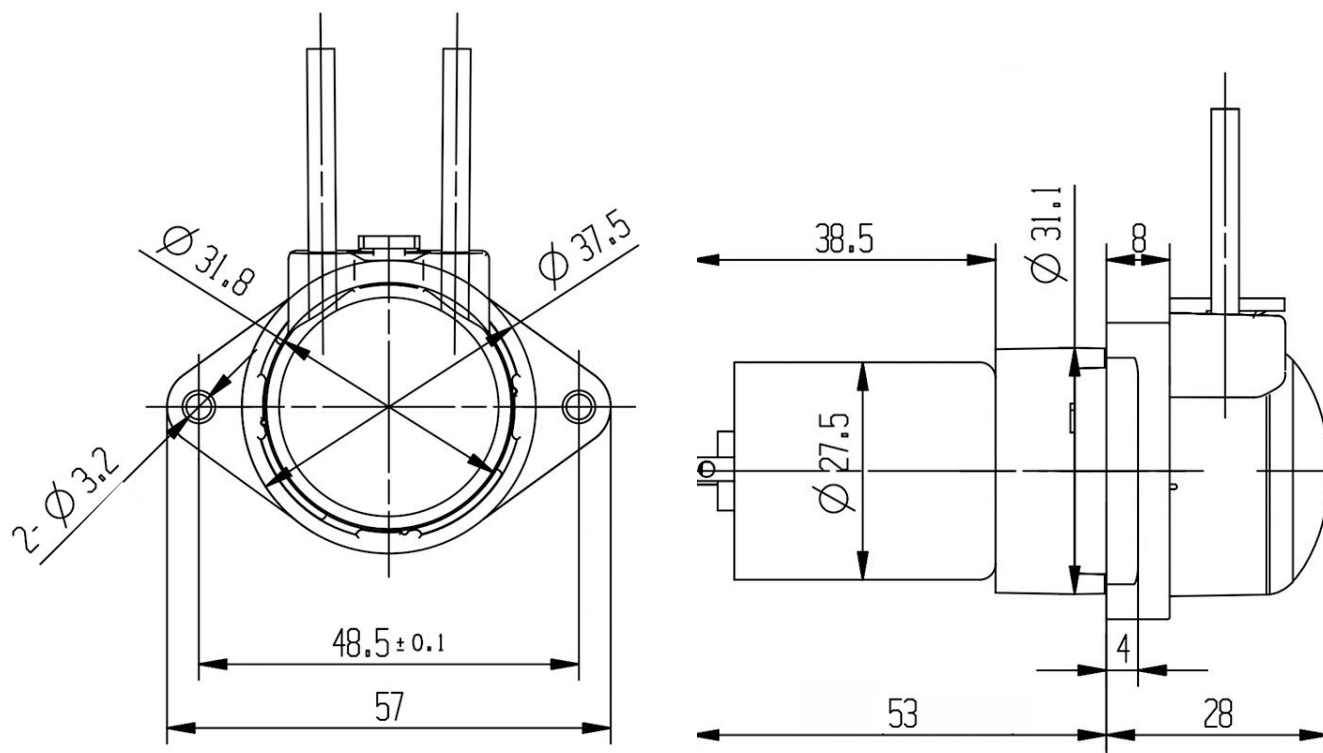
Water test at room temperature 20°C and atmospheric pressure.

The above data is for reference only, and there may be deviations in flow rate depending on different liquids, pressures, and pipeline lengths.

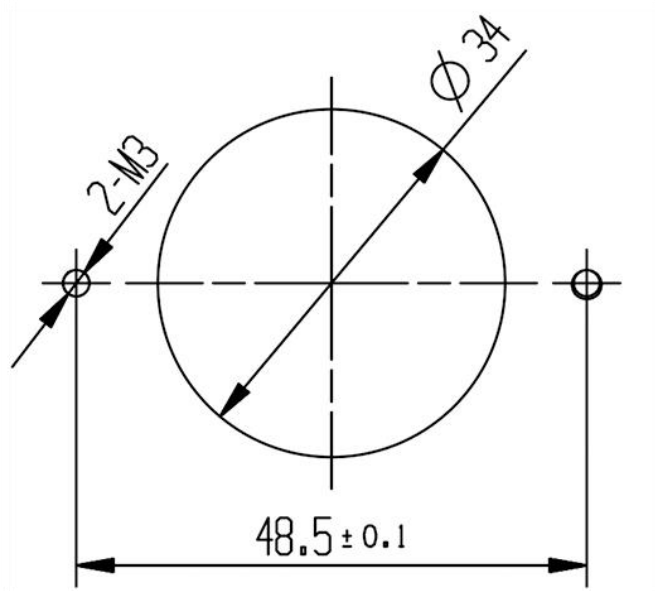
The material, flow rate, and control method of the pump tube can be customized according to the needs.

● Installation method

Installation mode A

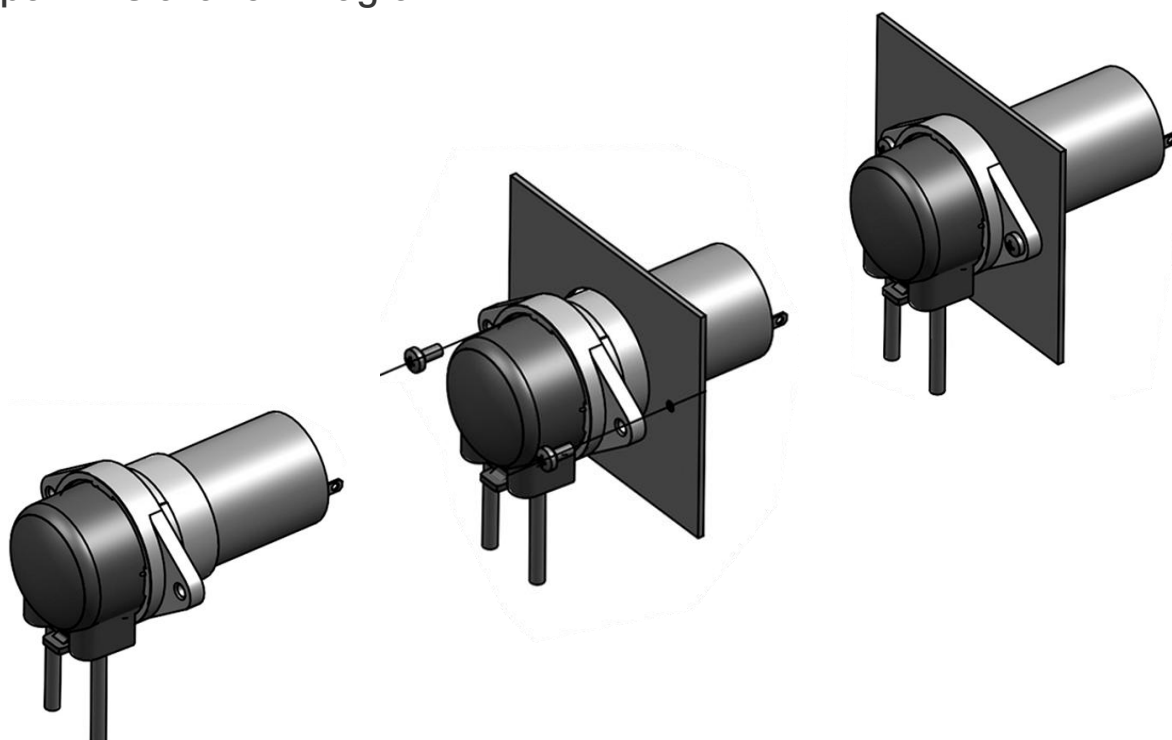


Opening size A



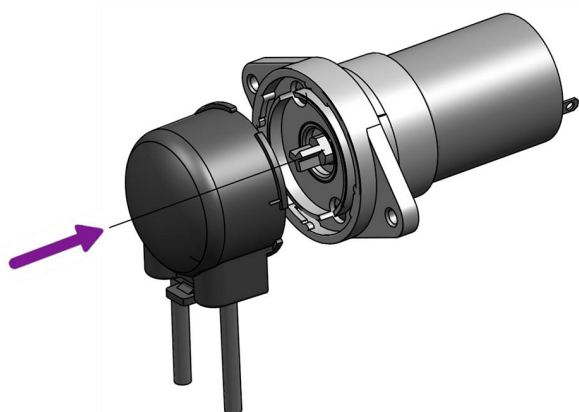
● Installation method

Type A Installation Diagram

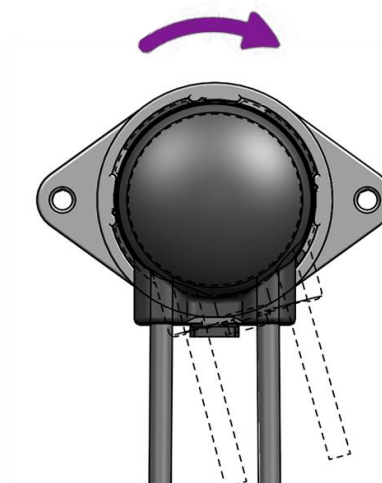


Pump head removal diagram

1. Load the corresponding position in the direction of the Arrow



2. Clockwise rotation 15° slot in place Rotor rotation is recommended clockwise, The orientation of the entrances and exits is shown below



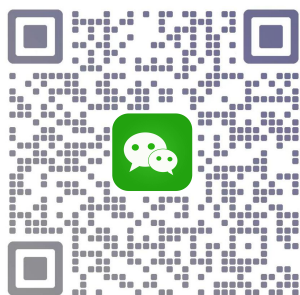
LEIRONG

雷熔流体

— Precision delivery intelligent control —

From product configuration to test conditions, it can be customized to your needs

Give your product a competitive advantage in the market



Contact person: Alex

Tel/WeChat: 15316363092

E-mail: 15316363092@163.com

Lei Rong Fluid Tech (Shanghai) Co., Ltd.