

# BP2000 DC motor peristaltic pump

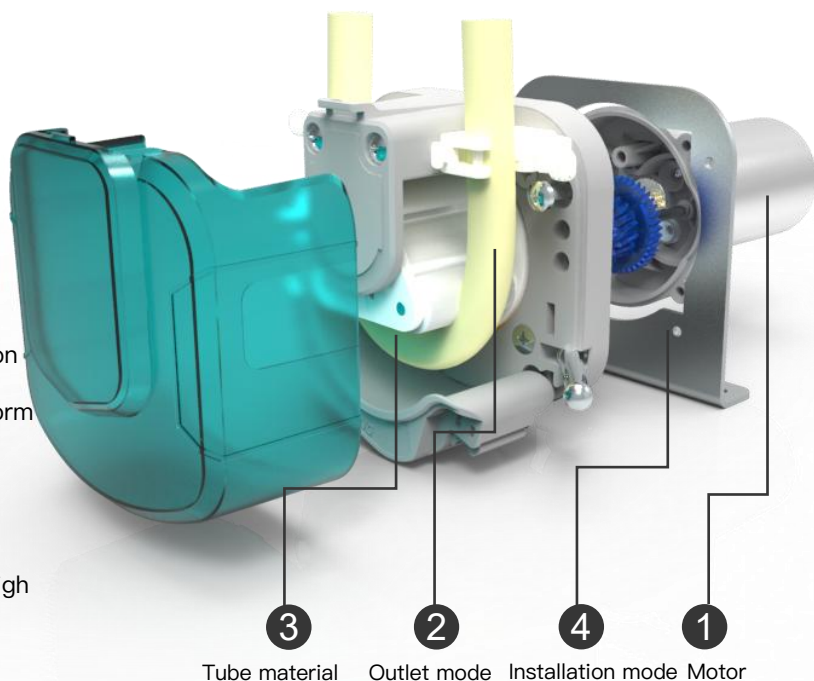


A/1

Product Brochure

## ● Structural decomposition

- Integrated spring compensation structure extends pump tube life Prevent liquid reflux negative pressure stabilization
- All helical gear multi-stage collaborative drive force uniform long life ultra-low noise High reliability
- Double bearing support drive long life maintenance free
- High strength and toughness engineering plastics have high strength and stable performance
- Transparent protective cover works visually beautiful and generous
- Imported peristaltic tube has good chemical resistance



## ● Model Interpretation

**BP2000**

**D24**

**U**

**N79H**

**B**

1

2

3

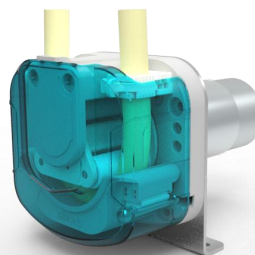
4

1

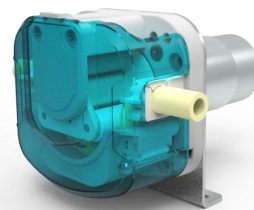


D24:24V DC Motor D12:12V DC Motor

2



U:Pipe outlet mode

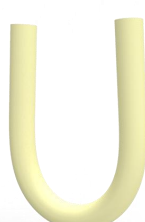


1:Pipe outlet mode

3

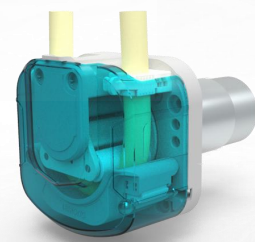


S:Silicone Tube

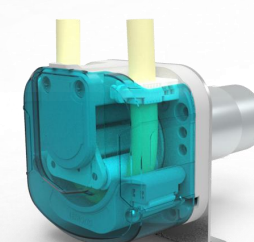


B:Pharmed BPT

4





A Installation mode



B Installation mode

## ● Pump tube selection

Code/Material	Features	Tube life
<b>B</b>  PharMed BPT	No cytotoxicity and hemolytic, resistance to ozone and UV rays, heat, ozone, acid and alkali resistance, anti-aging, anti-oxidation, long life. Operating temperature range -51 °C ~135 °C	≥1000h
<b>S</b>  Silicon tube	Low cost, weak acid and alkali resistance, corrosion resistance to chemicals compared to the BPT pump pipe	≤200h

Pump tube life testing method:

BP2000 peristaltic pump, speed: 350r/min, temperature 20 °C, Test liquid: water, continuous operation test. The slower the rotational speed of the peristaltic pump, the longer the service life of the pump tube. The service life of the pump tube may vary depending on the operating conditions, pipeline pressure, and liquid corrosiveness.

## ● Flow parameter

Tube Species		S64H	S79H	B64H	B79H
ID×OD		6.4X11.2	7.9X12.7	6.4X11.2	7.9X12.7
Tube Materials		Silicon tube	Silicon tube	BPT	BPT
Flow rate ml/min	24V DC Motor1A	1600	2200	1600	2100
	12V DC Motor2A	1600	2200	1600	2100
deal working conditions: ambient temperature 0–50 degrees, relative temperature less than 80%					

Flow testing method:

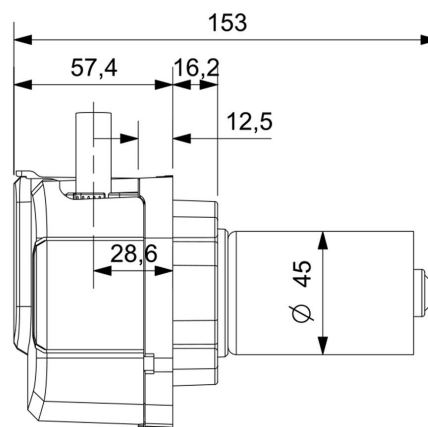
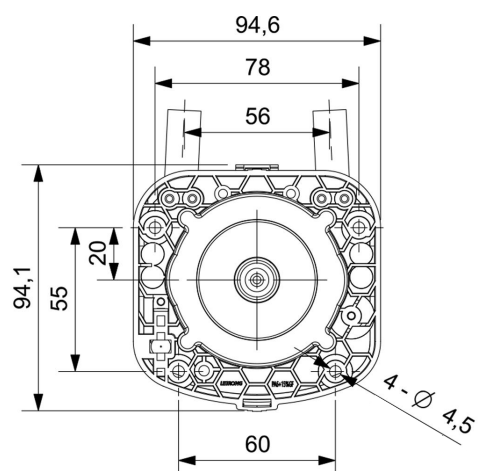
Water test at room temperature (20 °C) and atmospheric pressure.

The above data is for reference only, and there may be deviations in flow rate depending on different liquids, pressures, and pipeline lengths.

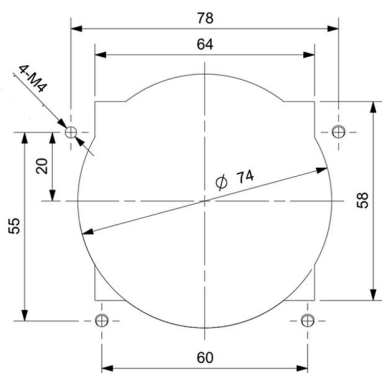
The material, flow rate, and control method of the pump tube can be customized according to the needs.

## ● Installation method

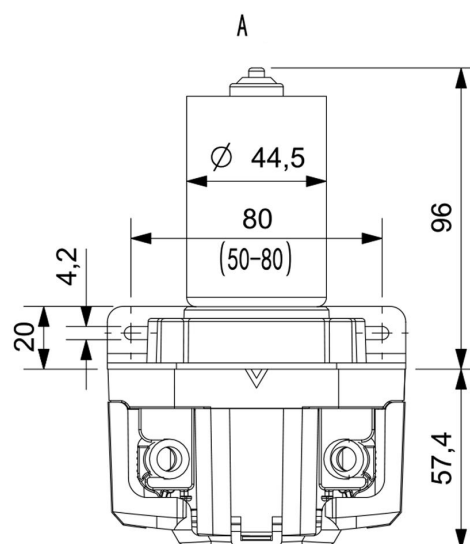
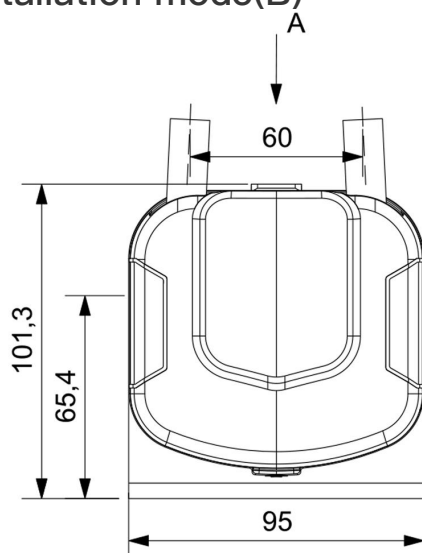
### Installation mode(A)



### Opening size(A)

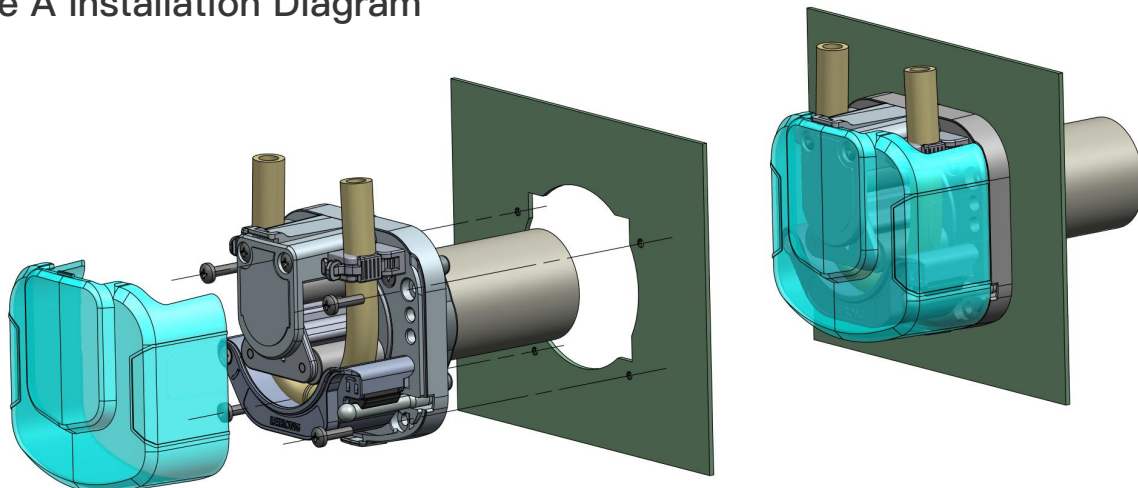


### Installation mode(B)

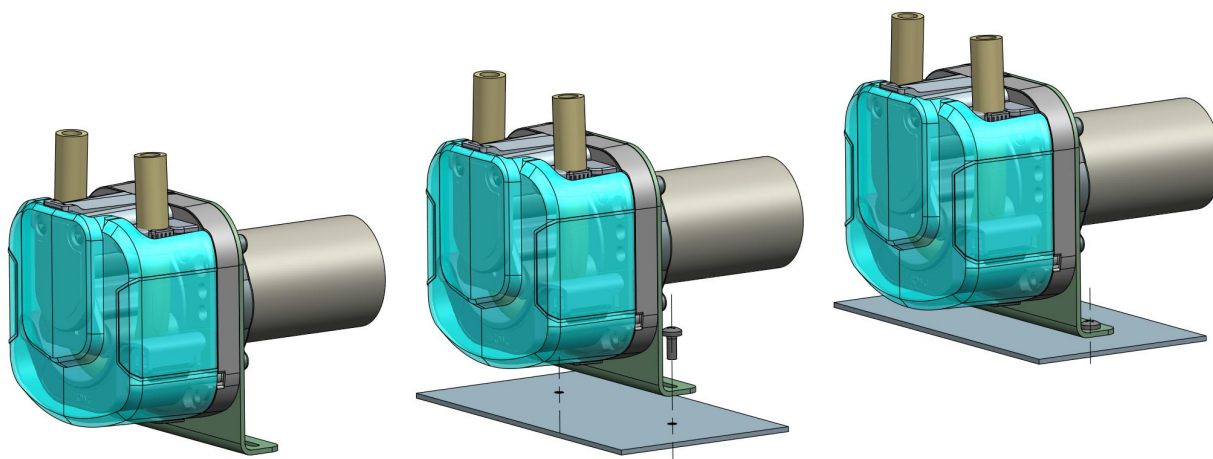


## ● Installation method

Type A Installation Diagram



Type B Installation Diagram



The pump tube can be switched to face the schematic

