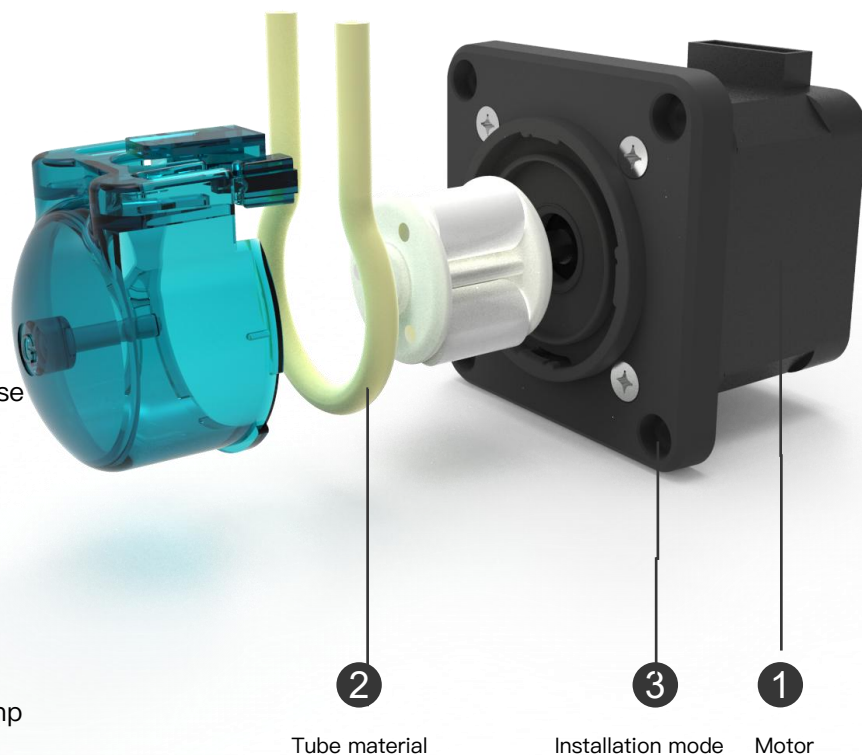


# BPG28/42stepper motor peristaltic pump



## ● Structural decomposition

- Stepper motor drive, precise control, low noise
- The rolling friction of synchronous disk structure is small and does not damage the pump pipe
- Small size and compact structure
- Easy maintenance Quick replacement of pump tube and pump head without tools
- Transparent pump case in a variety of colors



## ● Model Interpretation

**BPG**

—

**42**

**B20**

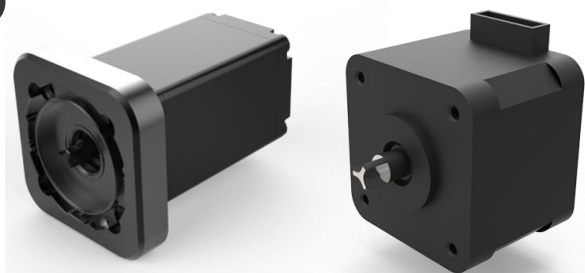
**A**

1

2

3

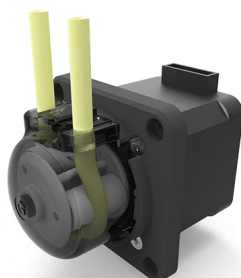
1





2



3



## ● Pump tube selection

Code/Material	Features	Tube life
<b>B</b>  PharMed BPT	No cytotoxicity and hemolytic, resistance to ozone and UV rays, heat, ozone, acid and alkali resistance, anti-aging, anti-oxidation, long life. Operating temperature range -51 °C ~132 °C	≥1000h
<b>S</b>  Silicon tube	Low cost, weak acid and alkali resistance, corrosion resistance to chemicals compared to the BPT pump pipe	≤200h

Pump tube life testing method:

BPG42 peristaltic pump, speed: 430r/min, temperature 20 °C, Test liquid: water, continuous operation test. The slower the rotational speed of the peristaltic pump, the longer the service life of the pump tube. The service life of the pump tube may vary depending on the operating conditions, pipeline pressure, and liquid corrosiveness.

## ● Flow parameter

Tube Species		S10/B10	S15/B15	S20/B20	S25/B25	S30/B30
ID×OD		1X3.2	1.5X3.5	2X4	2.5X4.5	3X5
Tube Materials		Silicon tube/BPT				
Flow rate ml/min	28motor 1.2A	7	22	30	46	55
	42motor 1.2A	12	38	55	90	115
deal working conditions: ambient temperature 0–50 degrees, relative temperature less than 80%						

Flow testing method:

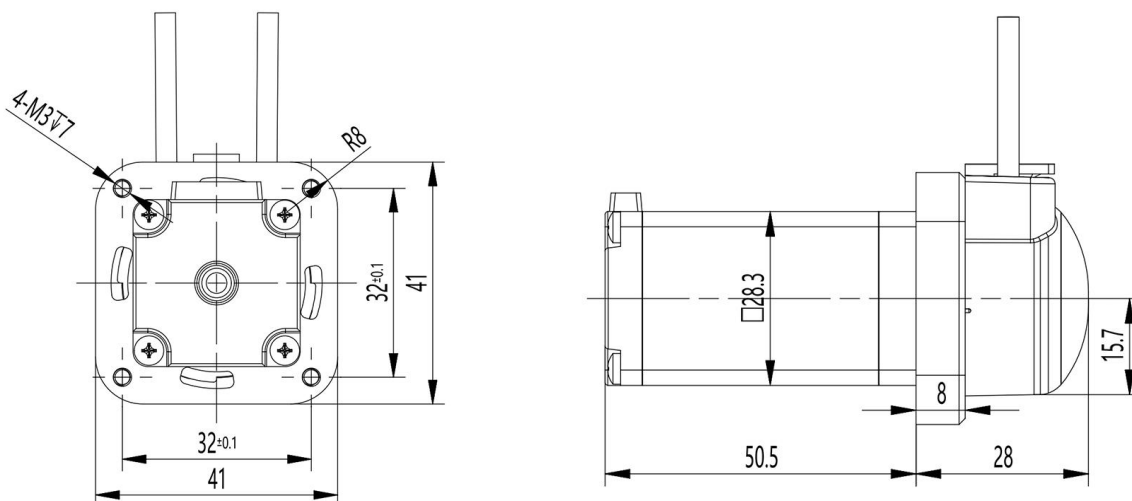
Water test at room temperature (20 °C) and atmospheric pressure.

The above data is for reference only, and there may be deviations in flow rate depending on different liquids, pressures, and pipeline lengths.

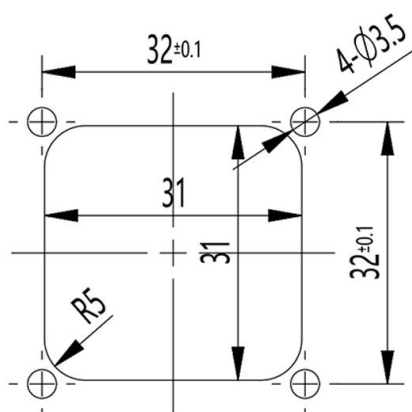
The material, flow rate, and control method of the pump tube can be customized according to the needs.

## ● Installation method

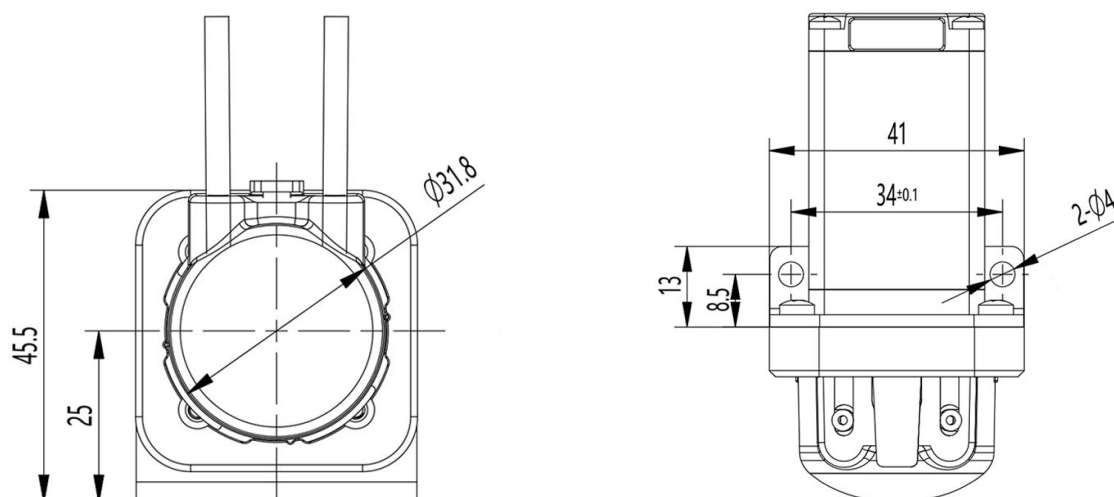
### 28Stepper motor-Installation mode(A)



### 28Stepper motor-Opening size(A)

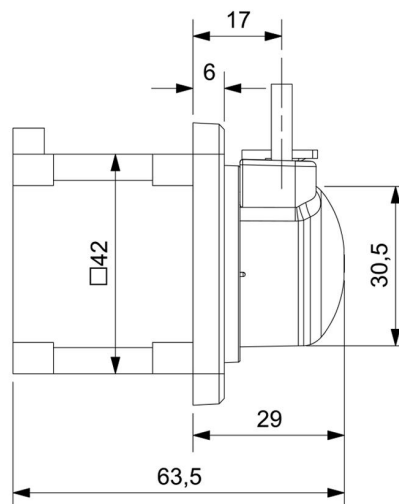
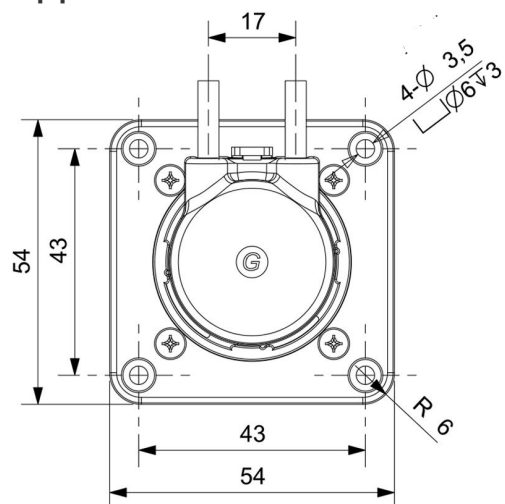


### 28Stepper motor-Installation mode(B)

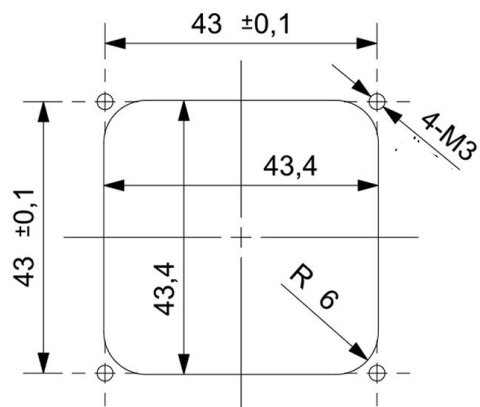


- Installation method

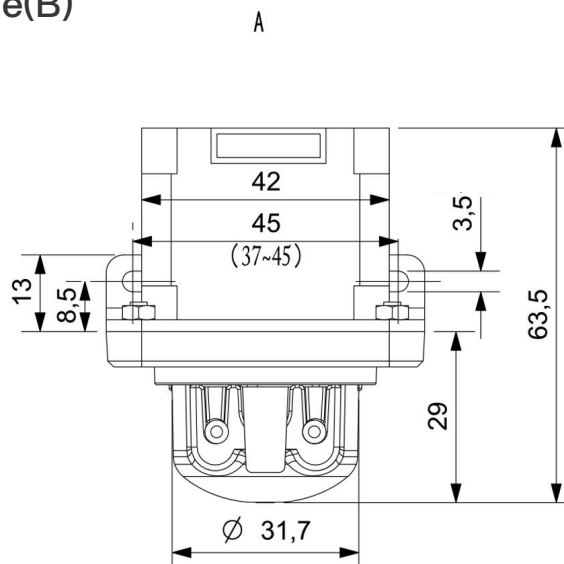
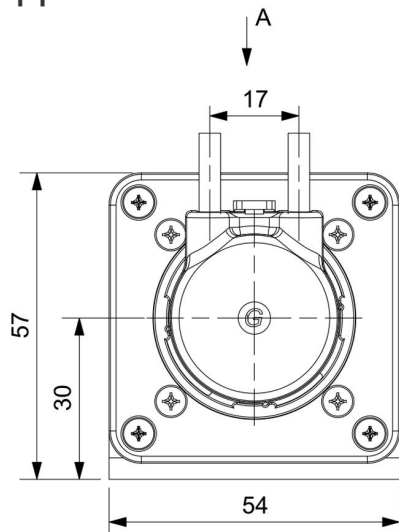
## 42Stepper motor-Installation mode(A)



## 42Stepper motor–Opening size(A)

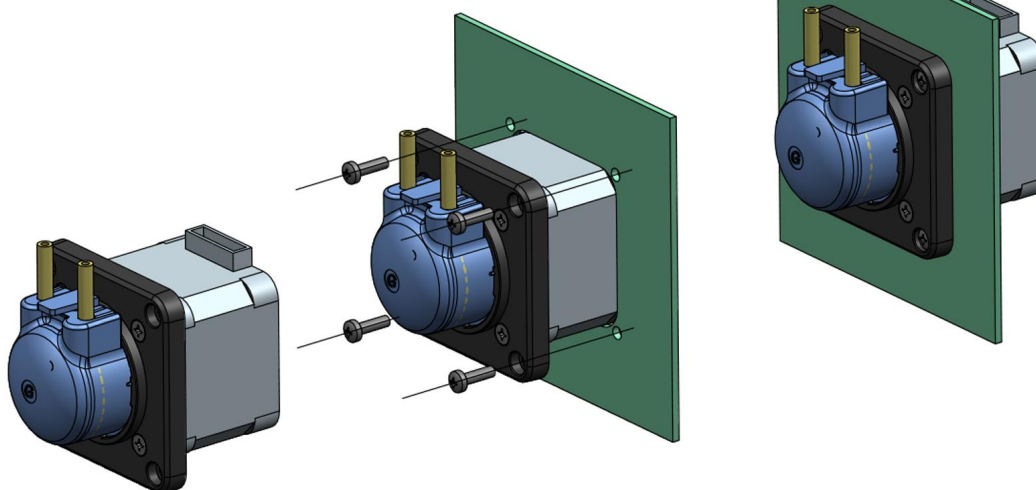


## 42Stepper motor-Installation mode(B)

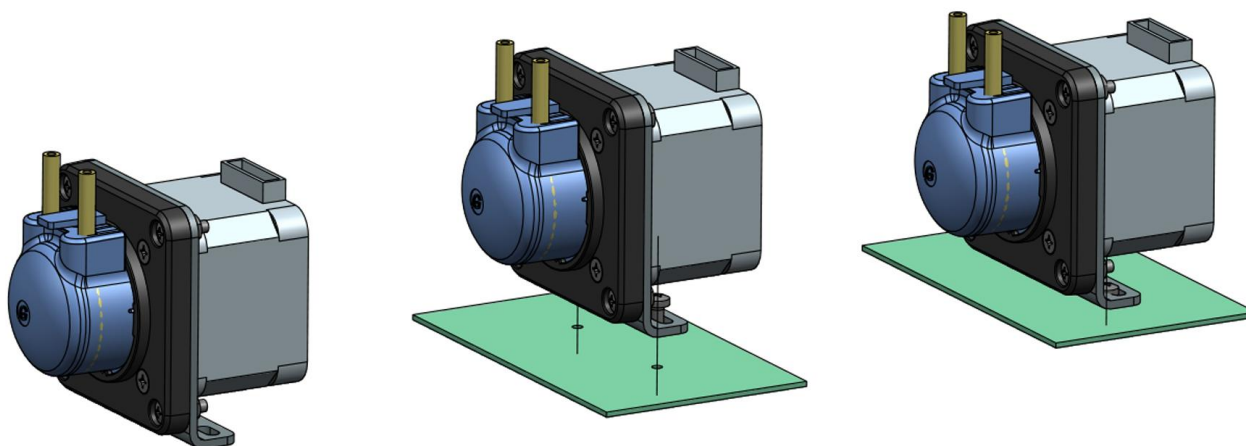


## ● Installation method

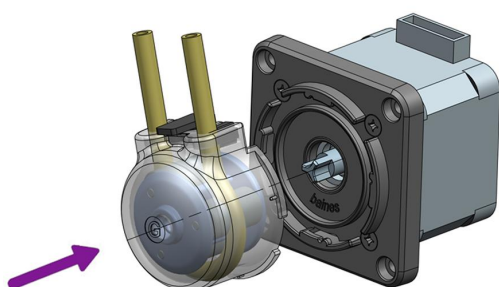
### Type A Installation Diagram



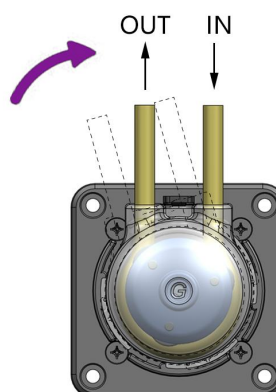
### Type B Installation Diagram



### Pump head removal diagram



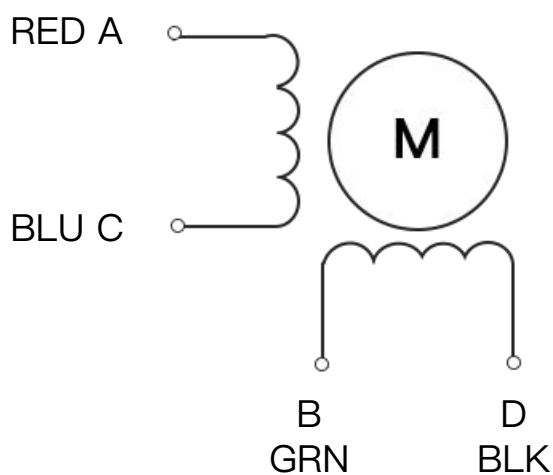
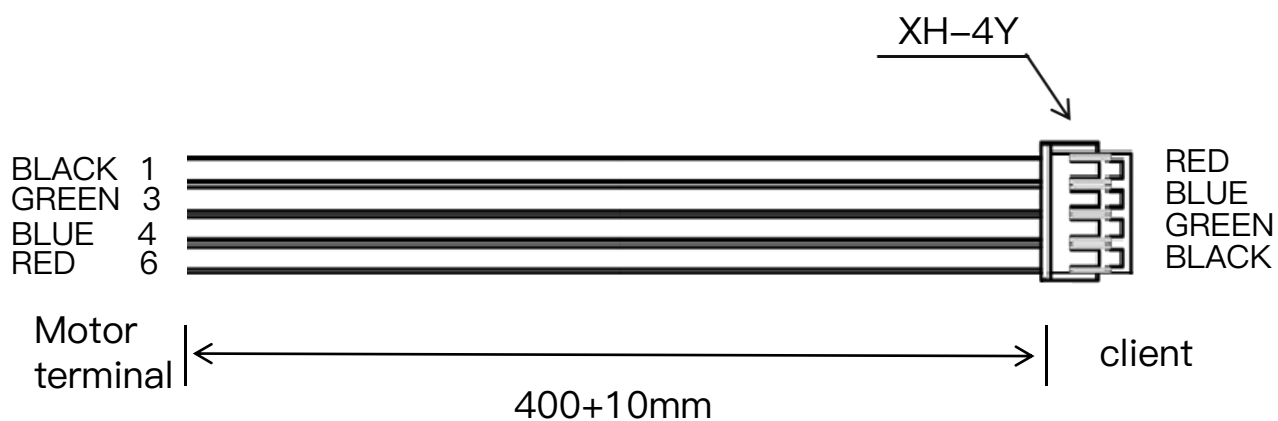
1. Load the corresponding position in the direction of the Arrow



2. Clockwise rotation 15° slot in place Rotor rotation is recommended clockwise, The orientation of the entrances and exits is shown below

## ● Description of Line Sequence

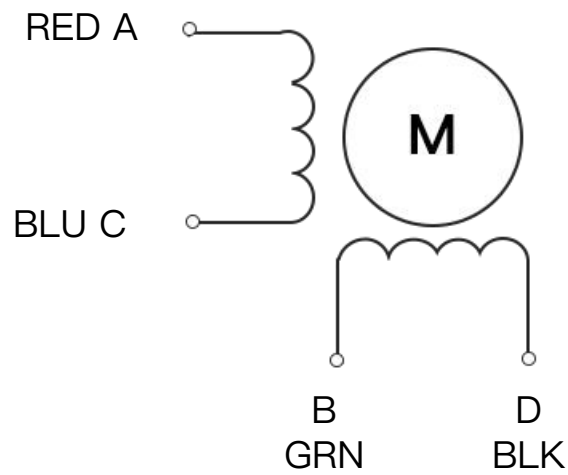
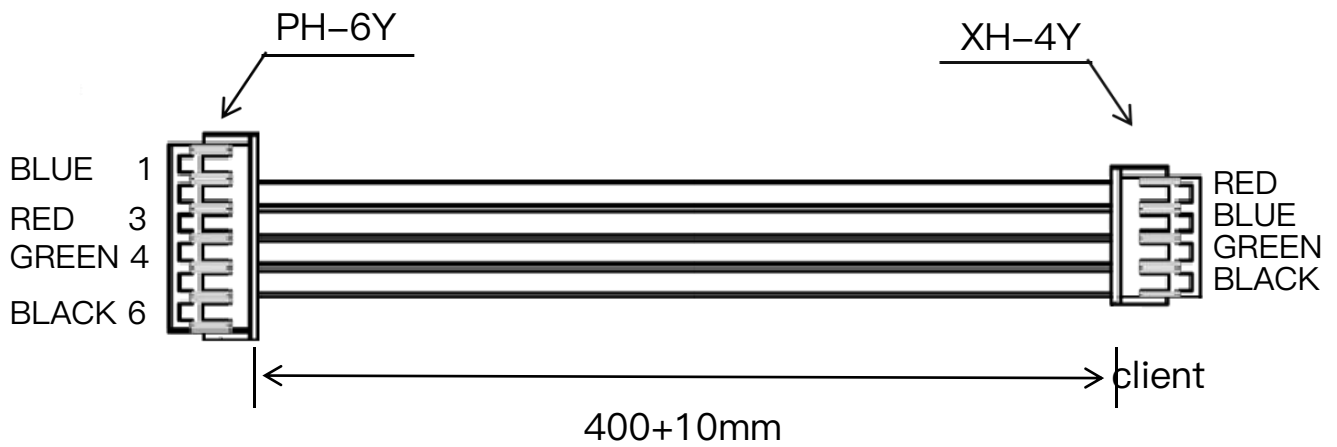
### 28 stepper motor line sequence description





## ● Description of Line Sequence

### 42stepper motor line sequence description







## — Precision delivery intelligent control —

From product configuration to test conditions, it can be customized to your needs

Give your product a competitive advantage in the market

Contact person: Anne Gao

WhatsApp:+86 15950522037

E-mail: [support@tdfluidcontrol.com](mailto:support@tdfluidcontrol.com)

TODA FLUID CONTROL TECHNOLOGY CO.,LTD

<https://www.tdfluidcontrol.com/>