



BP300 Series Peristaltic Pump

(DC motor)

Product manual

Version A/ 2

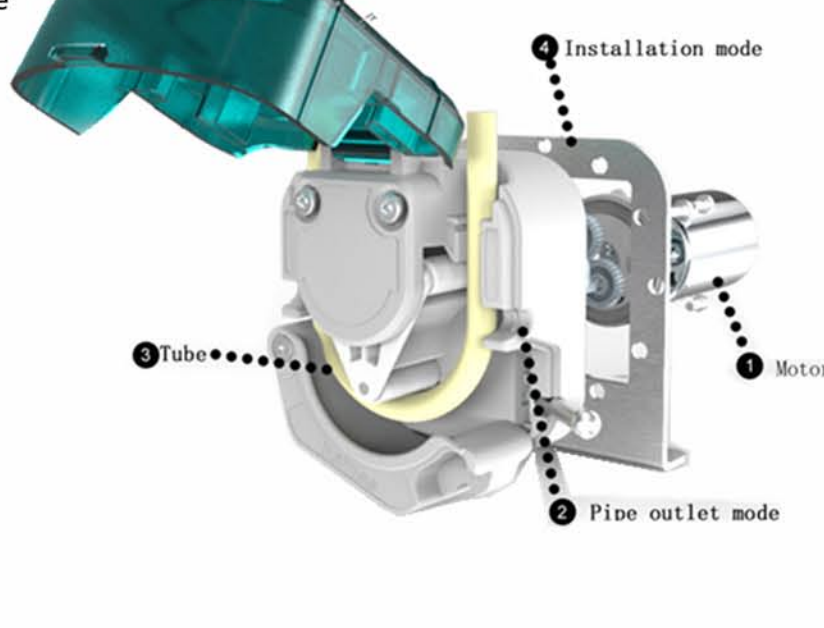
- 1 -



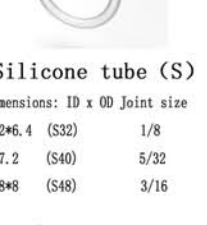

BP300 Selection Guide

Structural decomposition

Performance characteristics

- ♦The spring compensation structure can prolong the servelife of the pump pipe, prevent theliquid backflow and the negative pressure is stable
- ♦Gear transmission, Long lifeLow noise
- ♦Double bearing transmission, Long life, Maintenance free
- ♦Strengthening engineering plastics, High strength ,Stable performance
- ♦ransparent shell, Visible work, Beautiful andgenerous
- ♦The direction of pump pipe can be switched at will
- ♦Imported pump pipe, Good chemical resistance



BP300 —			
1	2	3	4
 DM: 24 V DC brush motor DN: 12V DC brush motor Voltage: 24 V / 12 V	 U: Pipe outlet mode 1: Pipe outlet mode U-shaped: The inlet and outlet are on the same side, straight line-shaped: The inlet and outlet are on the left and right sides.	 Silicone tube (S) Dimensions: ID x OD Joint size 3.2x6.4 (S32) 1/8 4x7.2 (S40) 5/32 4.8x8 (S48) 3/16 Norprene® (N) Dimensions: ID x OD Joint size 3.2x6.4 (N32) 1/8 4x7.2 (N40) 5/32 4.8x8 (N48) 3/16 Pipe joint material: PP (polypropylene)	 A installation mode (through plate B installation mode (vertical) B installation mode sheet metal material: SUS304 (stainless steel)

- 2 -

BP300 Selection Guide

Performance and flow parameter table of pump pipe

■ Tube

Code / Material of pump pipe	Performance characteristics	Pump tube life
N Norprene® Import Norprene®	Meeting the FDA certification and is very suitable for food and dairy products.Heat and ozone resistance, acid and alkali resistance, anti-aging, oxidationresistance, long life, working temperature range -59 degrees -135 C	≥1000h
S Silicone tube	Low cost, weak acid and alkali resistance, chemical corrosion resistanceis worse than the above NP pump pipe, service life is lower than NPPump pipe	≥200h

※ The test conditions of the above data are as follows: under the condition of 20 °C, pure water without pressure, bp300 three rotor pump head is used to continuously run at 430 RPM until the pump pipe cracks.The service life of pump pipe is different when the speed of pump head is different.In general, the slower the pump head speed, the longer the pump pipe life.The actual service life is affected by the medium, working condition, voltage and other factors. The test

■ Flow parameters

Pump pipe code			S32	S40	S48	N32	N40	N48
ID×OD			3.2X6.4	4X7.2	4.8X8	3.2X6.4	4X7.2	4.8X8
Tube material			S	S	S	Norprene®	Norprene®	Norprene®
Flow-rate ml/min	24V DC	0.3A	220	320	410	200	300	400
	12V DC	0.6A	220	320	410	200	300	400

Ideal working conditions: ambient temperature 0 ~ 40 °C, relative humidity < 80%

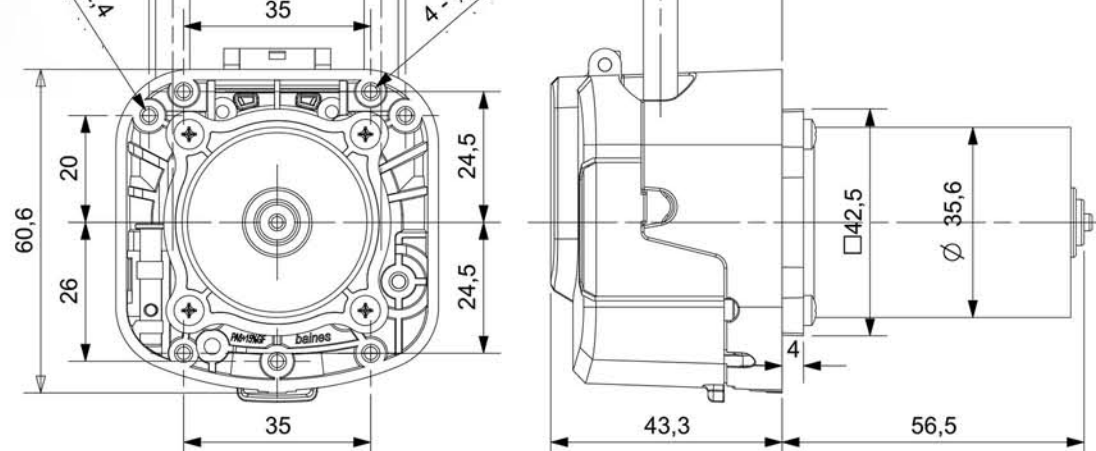
- Note 1. Test method: normal temperature (20 °C), Pure water test under normal pressure;
2.The above data is for reference only, and the flow rate will have deviation according to different liquid, pressure and pipe length;
3.Pump pipe material, flow rate and control mode can be customized according to requirements

- 3 -

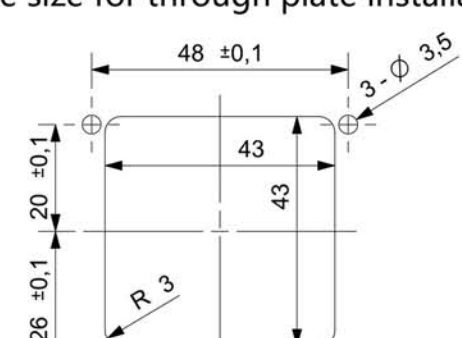
BP300 Selection Guide

Installation mode

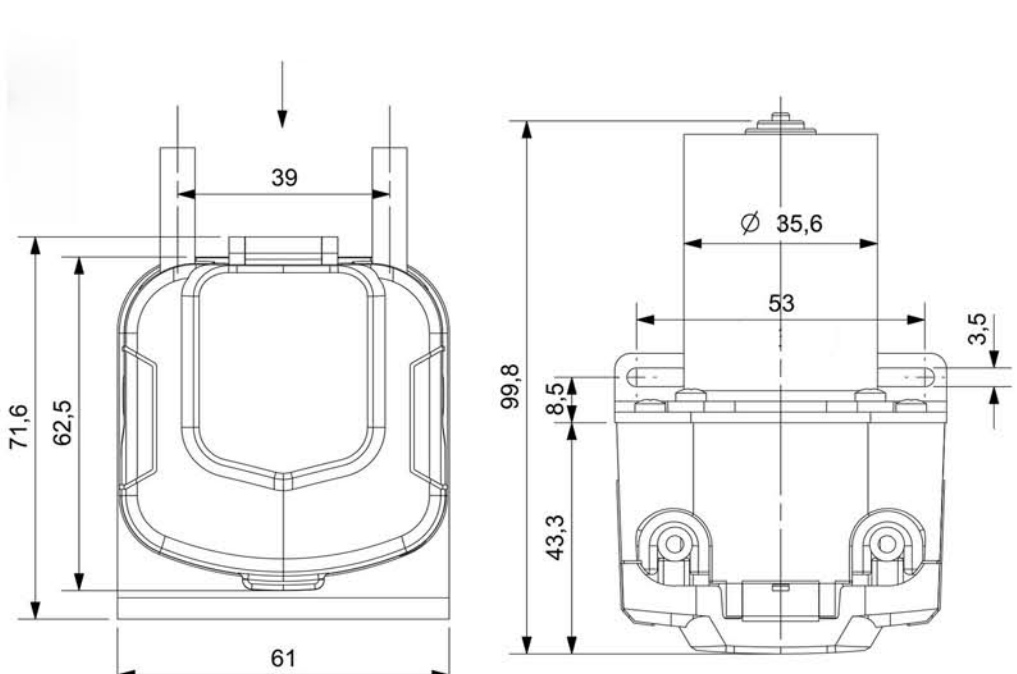
■ Installation method of through plate (Type A)



■ Hole size for through plate installation (Type A)



■ Vertical installation mode (Type B)

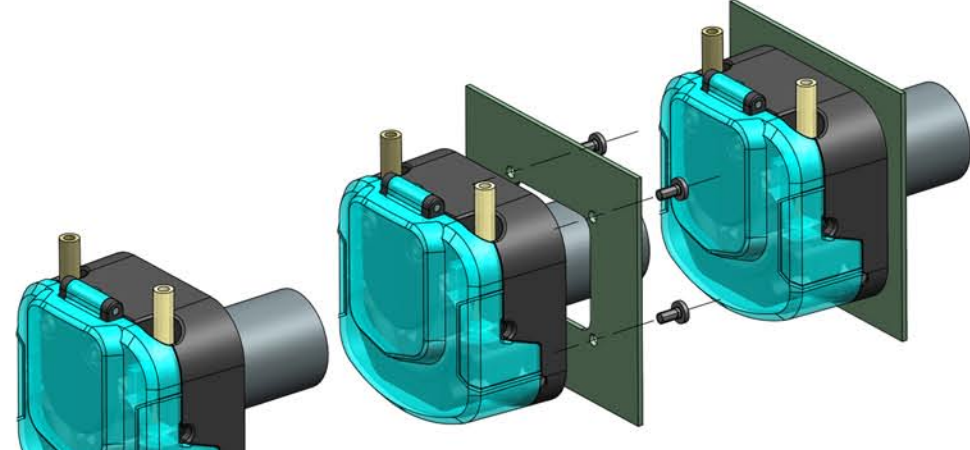


- 4 -

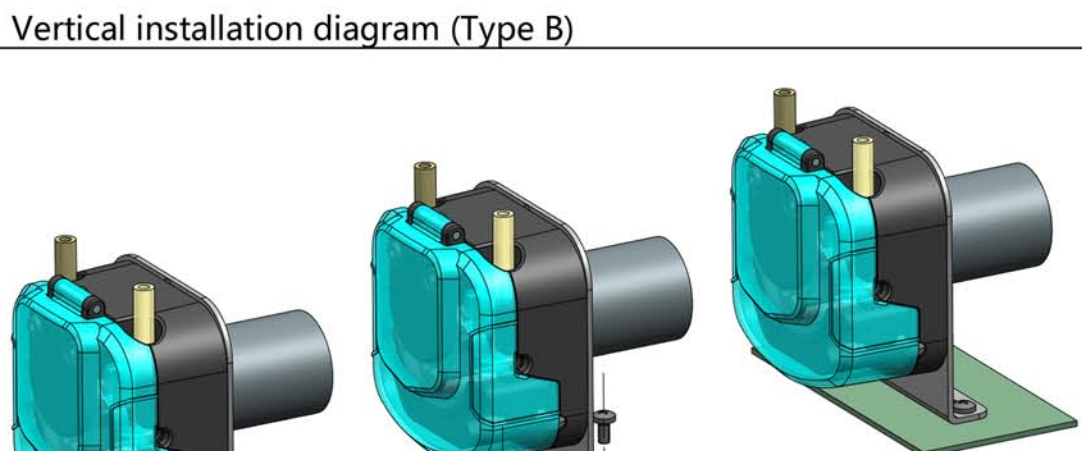
BP300 Selection Guide

Installation diagram / pump head direction diagram

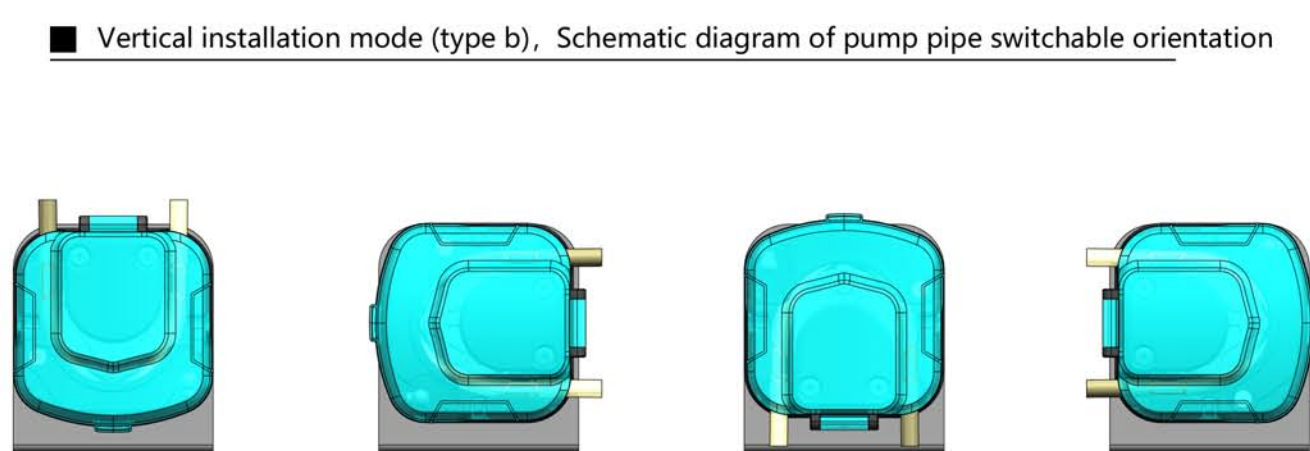
■ Installation diagram of through plate (Type A)



■ Vertical installation diagram (Type B)



■ Vertical installation mode (type b), Schematic diagram of pump pipe switchable orientation



- 5 -