



biomedicine

scientific experiment

plant protection



food machinery

hydroponics

BPG Series Peristaltic Pump

Product manual

-Rev A0



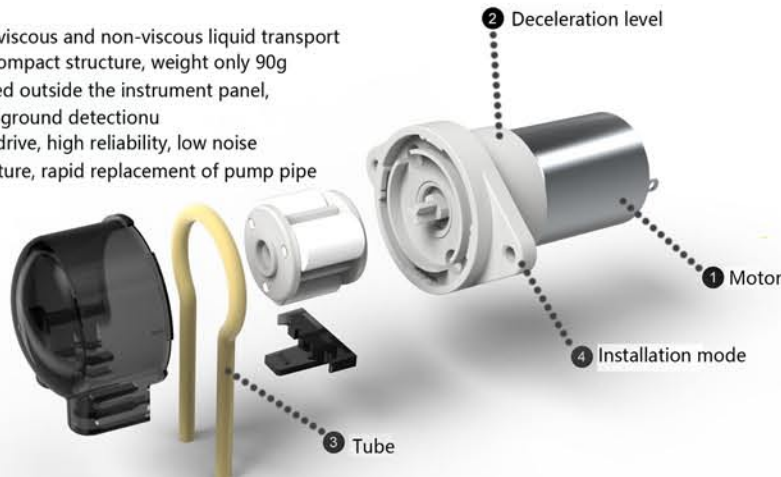
- 1 -

BPG Selection Guide

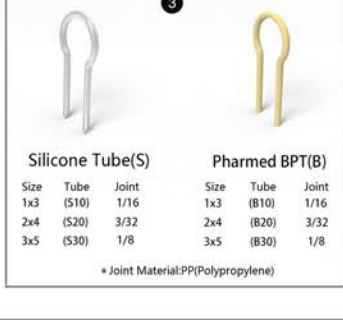
Summary of major components

Features

- ◆ Suitable for viscous and non-viscous liquid transport
- ◆ Small size, compact structure, weight only 90g
- ◆ Can be placed outside the instrument panel, through the ground detection
- ◆ Plastic gear drive, high reliability, low noise
- ◆ Simple structure, rapid replacement of pump pipe



BPG — DG 1 B20 A



- 2 -

BPG Selection Guide

Pump performance & Flow parameter

■ Type of tube

Code/Material	Features	Pump pipe service life
B Import PharMed®BPT	No cytotoxicity and hemolytic, resistance to ozone and UV rays, heat,ozone, acid and alkali resistance, anti - aging anti - oxidation, long life.Operating temperature range -51 °C ~132 °C	≥1000h
S Silicon tube	Low cost, weak acid and alkali resistance, corrosion resistance to chemicals compared to the BPT pump pipe	≥200h

※ The pipe type test quantity used is the measured data of BPG 3 rotor pump head running continuously at a speed of 430 RPM and a room temperature of 20 °C pure water without pressure until the pump pipe cracks appear.Pump head speed different pump pipe life is not the same, in general, the slower the pump head speed, the longer the pump pipe life, the actual service life is affected by the medium, operating conditions, voltage and other factors, test data for reference

■ Flow rate(ml/min)

Tube Species			S10	S20	S30	B10	B20	B30
Inside diameter * Outside diameter			1X3	2X4	3X5	1X3	2X4	3X5
Tube Materials			Silicon tube	Silicon tube	Silicon tube	BPT	BPT	BPT
Flow rate ml/min	24V DC Moter (DG) 0.2A	One slowdown gear	13	45	93	11	40	87
		Two slowdown gear	1	4	7	1	4	6
	12V DC Moter (DH) 0.4A	One slowdown gear	13	45	93	11	40	87
		Two slowdown gear	1	4	7	1	4	6
	6 V DC Moter (DV) 0.4A	One slowdown gear	13	45	93	11	40	87
		Two slowdown gear	1	4	7	1	4	6

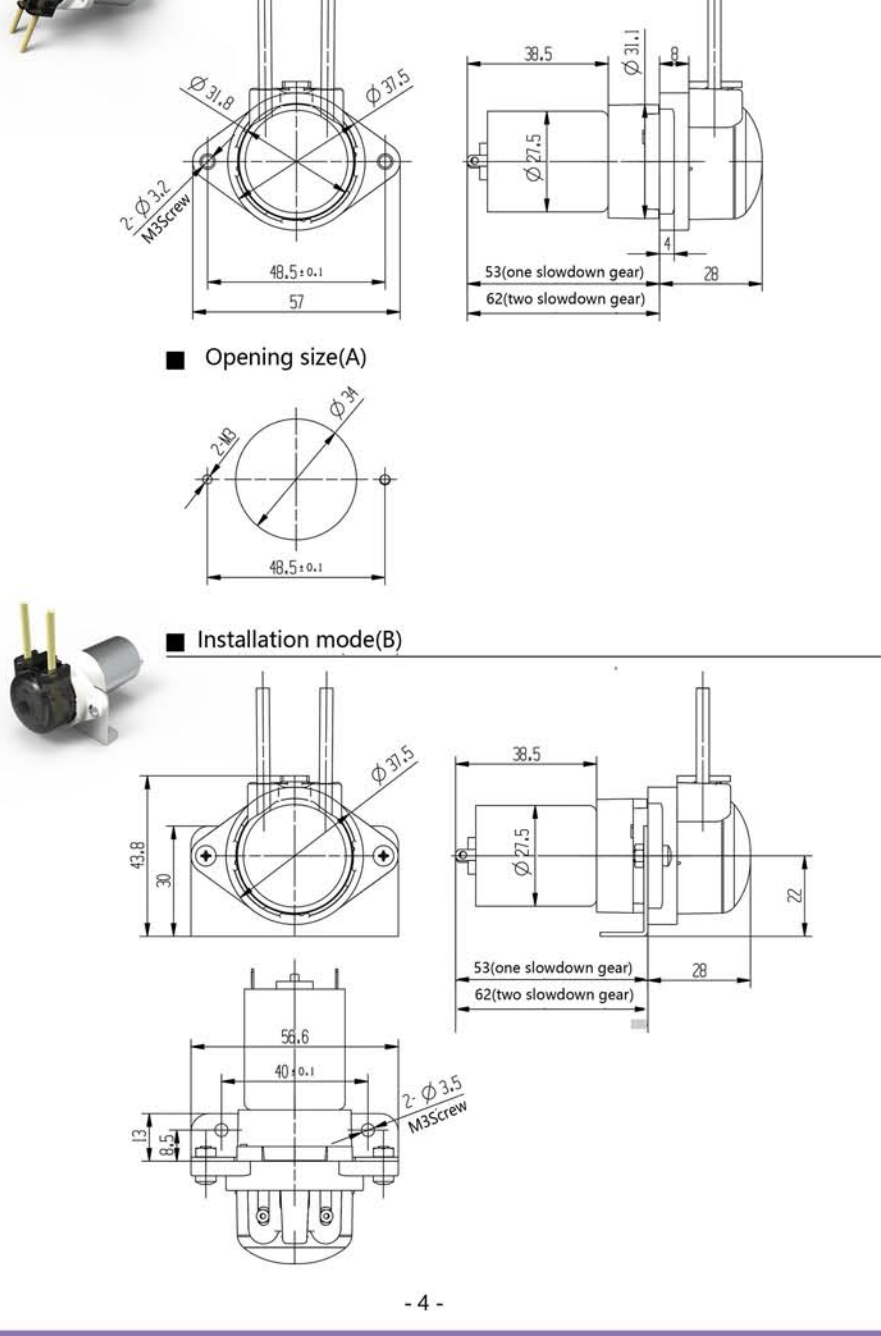
Ideal working conditions: ambient temperature 0-40 degrees, relative temperature less than 80%;The total length of the pump pipe is 135mm, and the inlet and outlet of the pump head is 30mm

※ 1 : The above flow parameters are measured at 20 °C room temperature and standard atmospheric pressure. The first-stage deceleration speed is 430rpm, and the second-stage deceleration speed is 30rpm by pure water without pressure. In fact, according to different media, different outlet pressure and assembly tolerance, there will be some errors in the flow.

- 3 -

BPG Selection Guide

A/B Installation mode

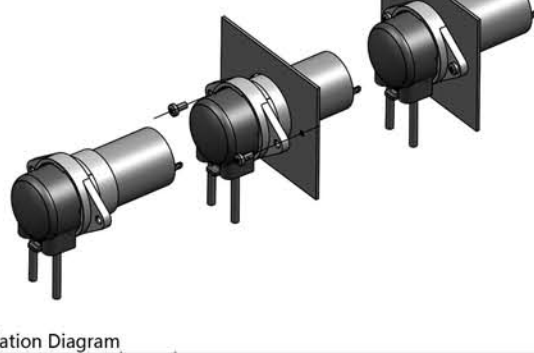


- 4 -

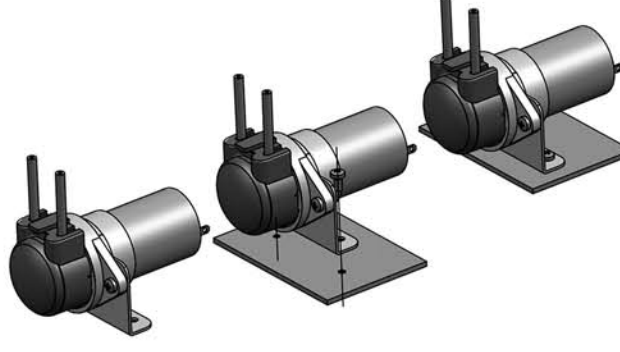
BPG Selection Guide

Installation Diagram & Pump head removal Diagram

■ Installation Diagram



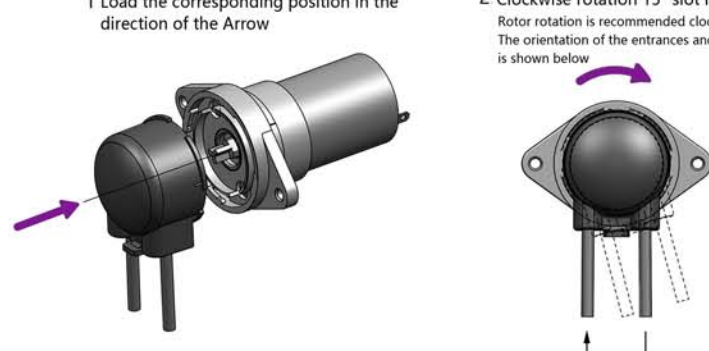
■ Installation Diagram



■ Pump head removal diagram

1 Load the corresponding position in the direction of the Arrow

2 Clockwise rotation 15° slot in place
Rotor rotation is recommended clockwise,
The orientation of the entrances and exits
is shown below



- 5 -